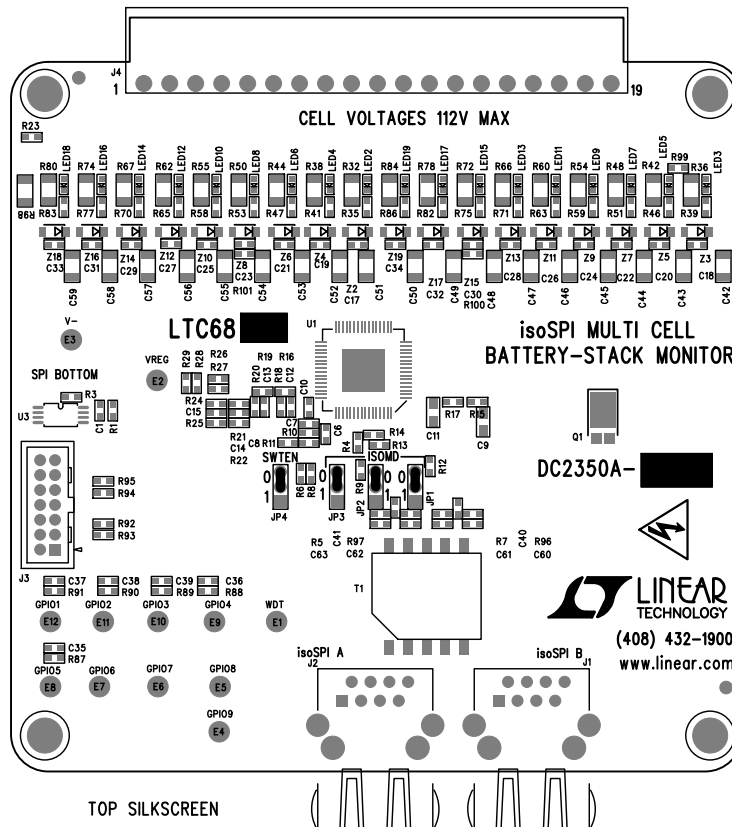


REVISION HISTORY				
ECO	REV	DESCRIPTION	APP. ENG.	DATE
-	4	4rs PROTOTYPE	CUYLER L.	11-08-16



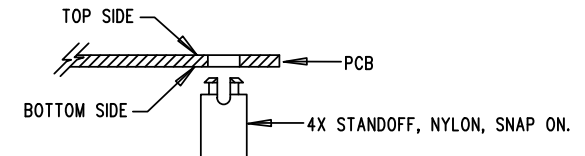
TOP SILKSCREEN
 LINEAR TECHNOLOGY DATE: 11-08-16
 DC2350A-4-LTC6813/12
 isoSPI MULTI CELL BATTERY-STACK MONITOR


8. MARK EACH ASSEMBLY TYPE WITH
 BLACK PERMANENT MARKER AS SHOWN IN TABLE BELOW:

ASSY TYPE	U1	R36	R37	R39	R50	R52	R53	R72	R73	R75	C18	C30	C23	LED3	LED8	LED15	R99	R100	R101
DC2350A-A	LTC6812ILWE-1	OPT	OPT	OPT	OPT	OPT	OPT	OPT	OPT	OPT	OPT	OPT	OPT	OPT	OPT	OPT	0	0	0
DC2350A-B	LTC6813ILWE-1	10	33	475	10	33	475	10	33	475	0.1uF	0.1uF	0.1uF	INSTALL	INSTALL	INSTALL	OPT	OPT	OPT

NOTES: UNLESS OTHERWISE SPECIFIED

1. WORKMANSHIP SHALL BE IN ACCORDANCE WITH IPC-A-610.
2. ASSEMBLY PROCESS SHALL INCLUDE: REFLOW SOLDER TOP SIDE SMD. MAXIMUM SOLDER TEMPERATURE IS 240 DEGREES CELSIUS.
3. PARTS TO OMIT WILL BE SPECIFIED ON THE BILL OF MATERIALS. LOCATIONS OF OMITTED PARTS SHALL BE FREE OF SOLDER. MASK THE SOLDER STENCIL WHERE SMT PARTS ARE OMITTED.
4. INSTALL SHUNTS AS SHOWN ON ASSY DRAWING.
5. DEPANELIZE BOARDS AFTER ASSEMBLY AND ROUTE-OUT THE BREAKOUT TABS ON FOUR SIDES OF THE BOARD EDGE.
6. DO NOT APPLY ANY KIND OF ASSEMBLY STAMP OR QA STAMP TO ANY BOARD.
7. INSTALL 4 STANDOFFS AT 4 LOCATIONS AS SHOWN BELOW:



APPROVALS		 1630 MCCARTHY BLVD MILPITAS, CA 95035 PH: (408)432-1900 www.linear.com LTC CONFIDENTIAL- FOR CUSTOMER USE ONLY		
PCB DES.	AK			
APP ENG.	CUYLER L.	TITLE: TOP ASSEMBLY DRAWING		
		isoSPI MULTI CELL BATTERY-STACK MONITOR		
		SIZE	IC NO. LTC6813/12	REV.
		N/A	DEMO CIRCUIT 2350A	3
SCALE = NONE		FILENAME: DC2350A-3.PCB		SHT 1 OF 2